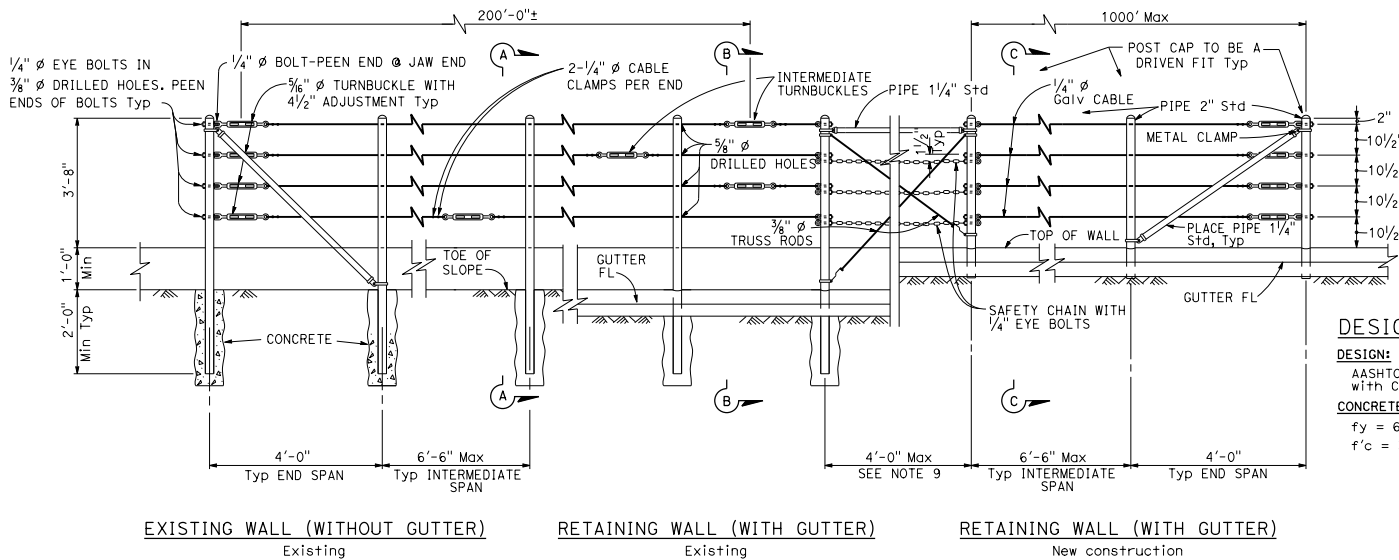


DIST	COUNTY	ROUTE	POST MILES TOTAL PROJECT	SHEET NO.	TOTAL SHEETS

Gregory J. Kober
 REGISTERED CIVIL ENGINEER
 No. C40814
 Exp. 3-31-25
 CIVIL
 STATE OF CALIFORNIA

May 1, 2023
 PLANS APPROVAL DATE
 THE STATE OF CALIFORNIA OR ITS OFFICERS OR AGENTS SHALL NOT BE RESPONSIBLE FOR THE ACCURACY OR COMPLETENESS OF SCANNED COPIES OF THIS PLAN SHEET.



DESIGN NOTES

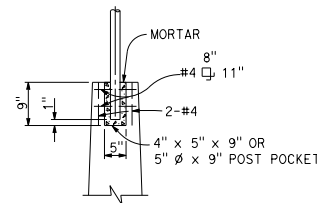
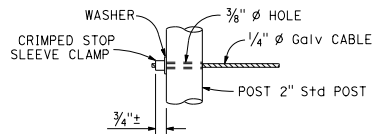
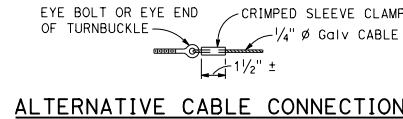
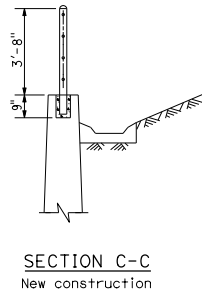
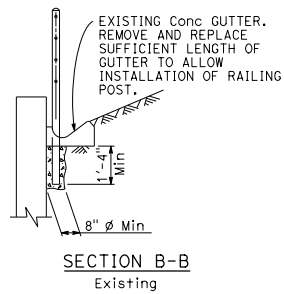
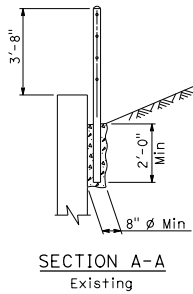
DESIGN:
 AASHTO LRFD Bridge Design Specifications 8th Edition 2017 with California Amendments April 2019

CONCRETE:
 fy = 60 ksi
 f'c = 3.6 ksi

ELEVATION

NOTES:

- Maximum distance between turnbuckles shall be 200'-0"±.
- Intermediate turnbuckles to be placed in adjacent spans.
- Cable shall not be spliced between intermediate turnbuckles and end posts.
- Posts to be vertical.
- Alignment of holes in posts may vary to conform to slope of top of retaining wall.
- The Contractor shall verify all dependent dimensions in the field before ordering or fabricating any material.
- Line posts shall be braced horizontally and trussed diagonally in both directions at intervals not to exceed 1000'.
- Post pockets to be centered in top of wall.
- Typical end spans, braced in both directions, shall be constructed at changes in line where the angle of deflection is 15° or more.
- Shall not be used for pedestrian walkways.



STATE OF CALIFORNIA
 DEPARTMENT OF TRANSPORTATION
CABLE RAILING
 NO SCALE

B11-47